

Stylized Image Triangulation Additional Material

Submission ID: 1074



Figure 1: For reproducibility, this figure contains the remaining original images from the main paper: a still life, a river photograph, a concert, a giraffe, a cherry, two candles and a portrait. For all other experiments, the original images appeared in the paper.

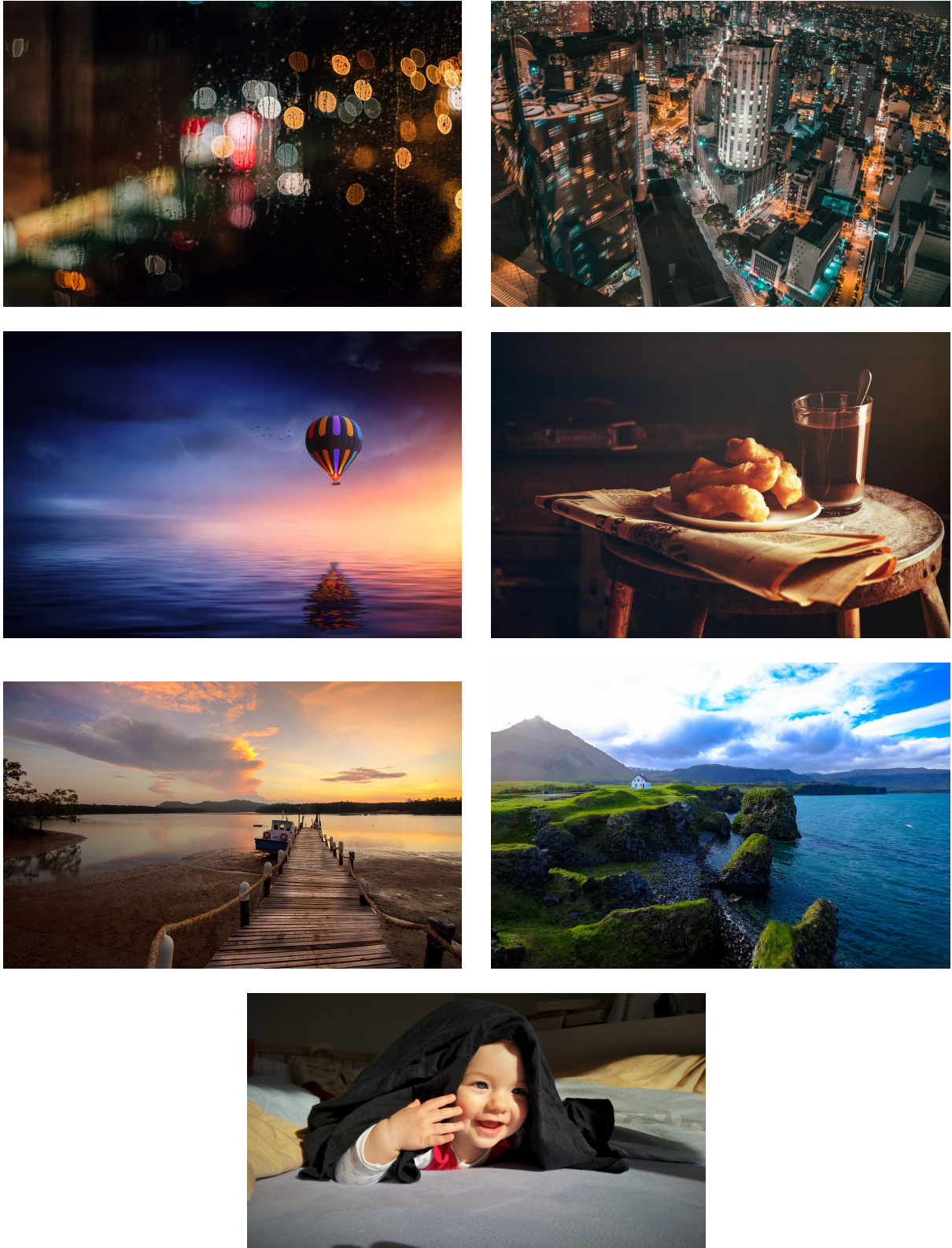


Figure 2: Larger version of the comparison from the main paper: Original images

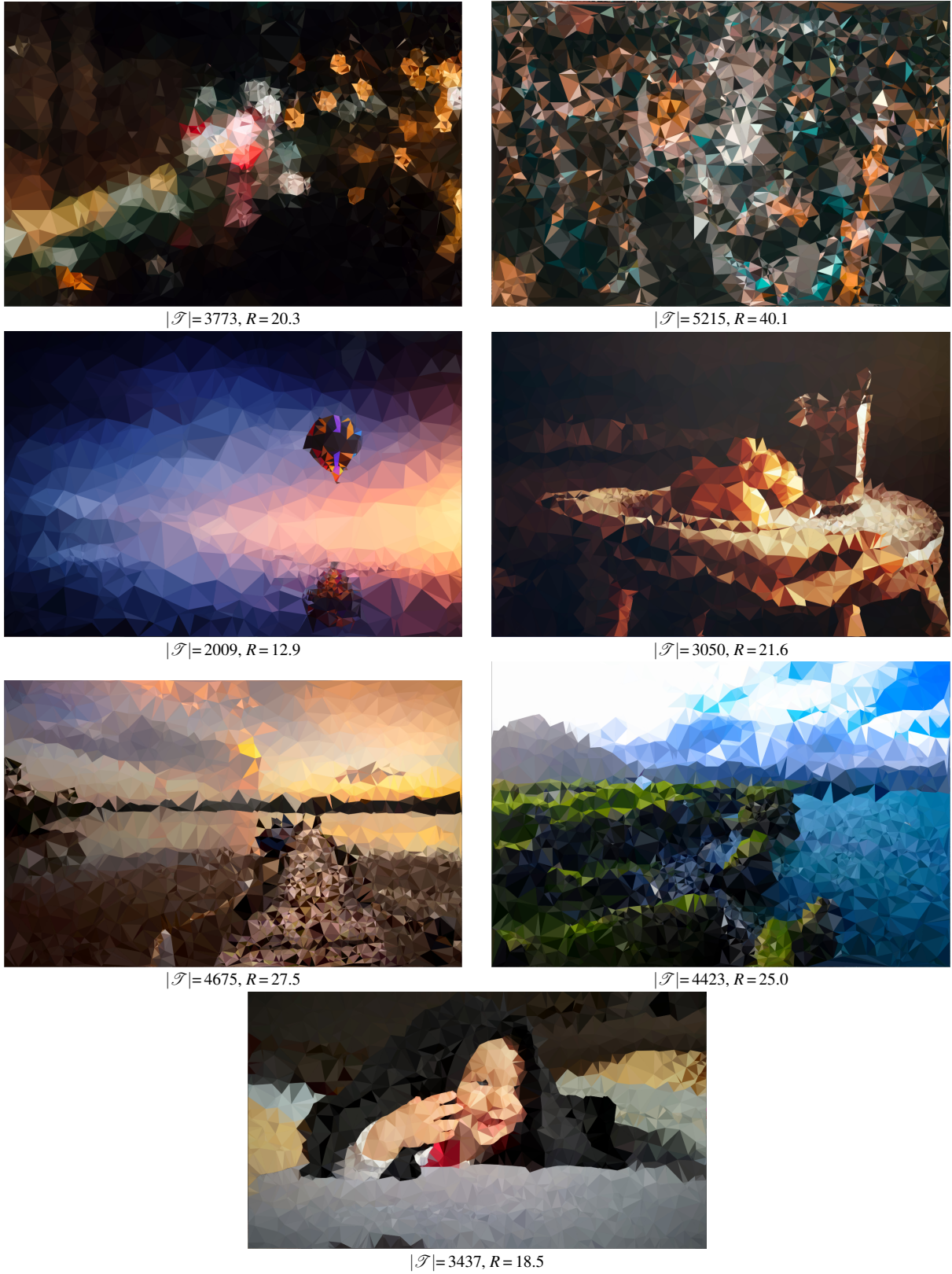


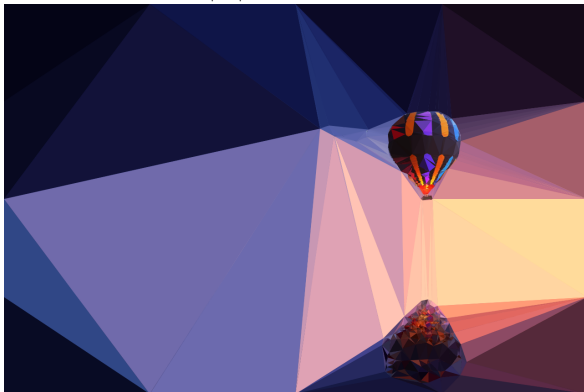
Figure 3: Larger version of the comparison from the main paper: Conceptfarm



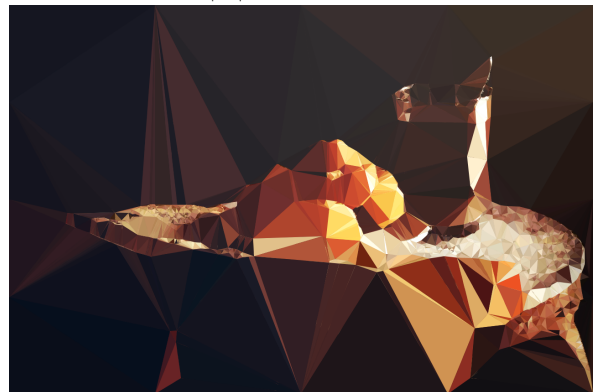
$|\mathcal{T}|=7099, R=22.0$



$|\mathcal{T}|=24277, R=27.8$



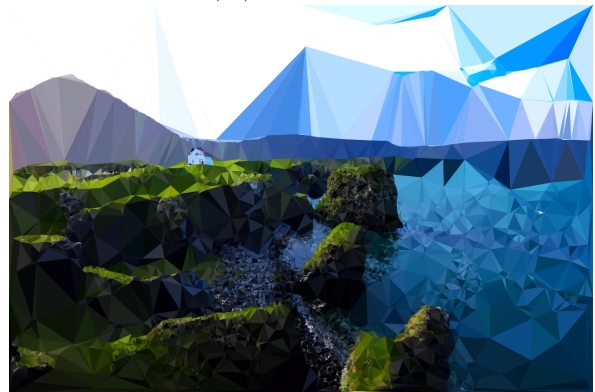
$|\mathcal{T}|=1512, R=37.7$



$|\mathcal{T}|=3324, R=32.3$



$|\mathcal{T}|=8395, R=29.0$



$|\mathcal{T}|=10540, R=27.8$



$|\mathcal{T}|=7328, R=20.2$

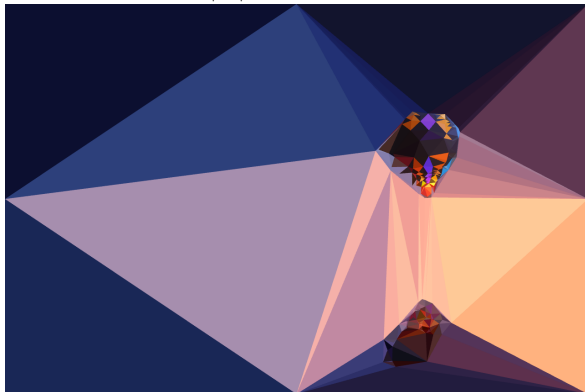
Figure 4: Larger version of the comparison from the main paper: Bórquez



$|\mathcal{T}|=3203, R=26.4$



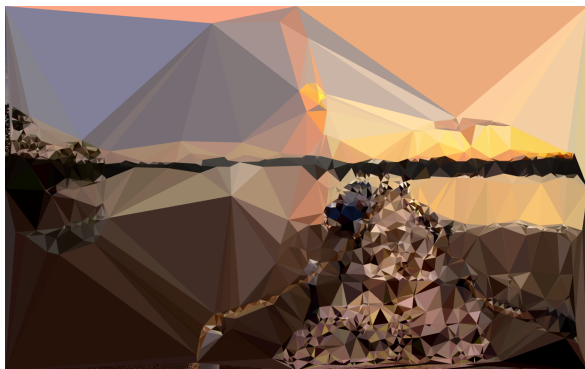
$|\mathcal{T}|=14537, R=35.1$



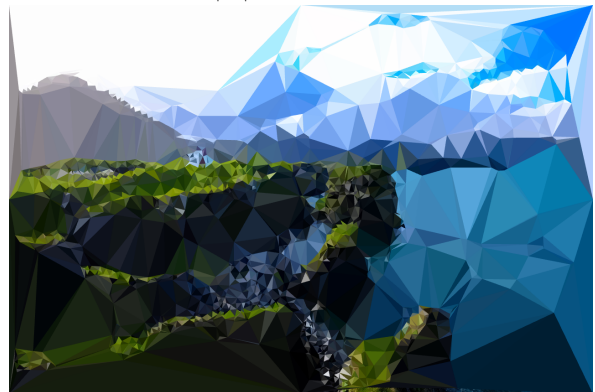
$|\mathcal{T}|=416, R=38.1$



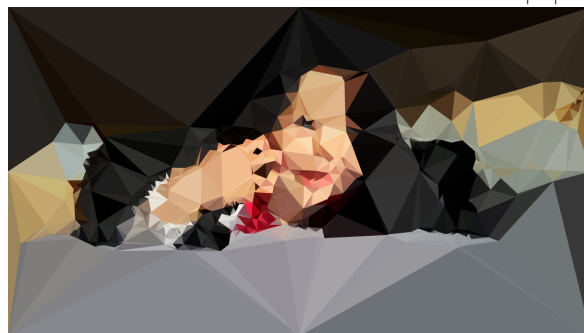
$|\mathcal{T}|=2382, R=21.4$



$|\mathcal{T}|=4703, R=32.0$

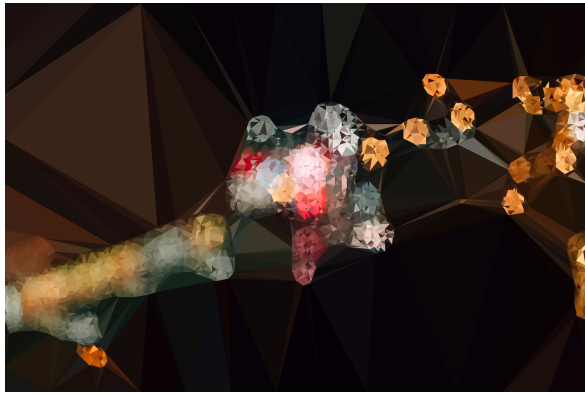


$|\mathcal{T}|=4455, R=27.1$

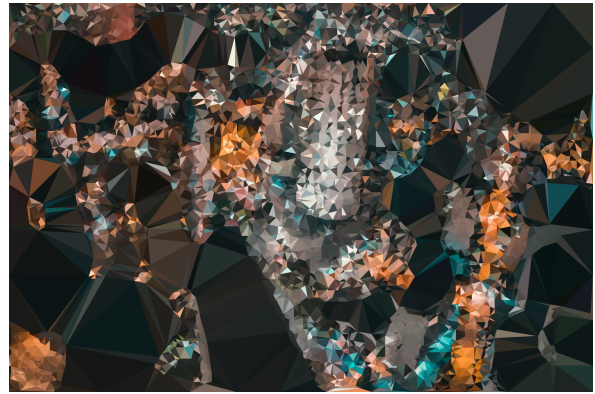


$|\mathcal{T}|=1507, R=28.3$

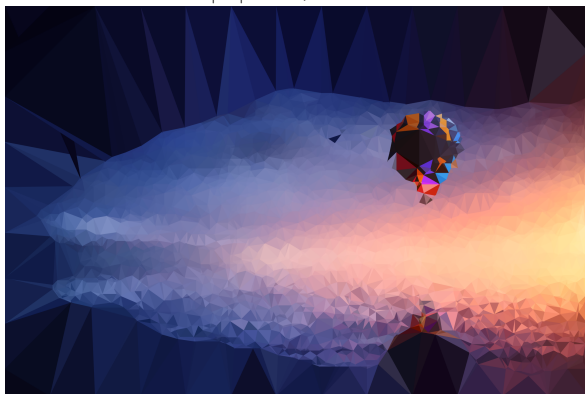
Figure 5: Larger version of the comparison from the main paper: Dmesh



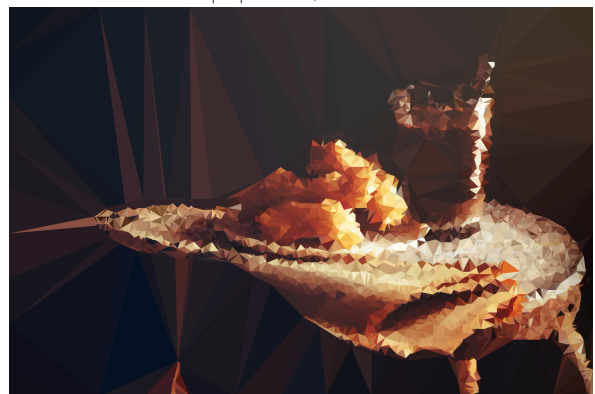
$|\mathcal{T}|=5632, R=20.6$



$|\mathcal{T}|=11232, R=36.1$



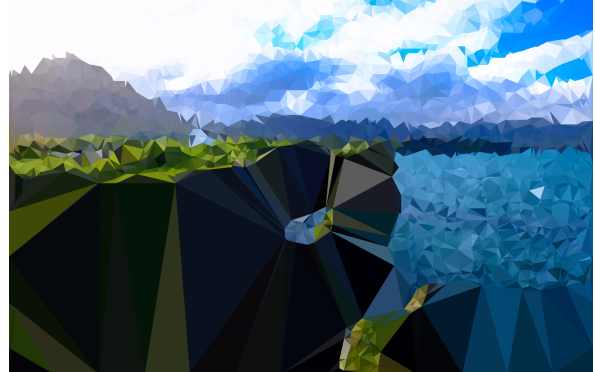
$|\mathcal{T}|=4146, R=14.7$



$|\mathcal{T}|=5004, R=18.8$



$|\mathcal{T}|=4829, R=27.7$



$|\mathcal{T}|=4356, R=24.2$

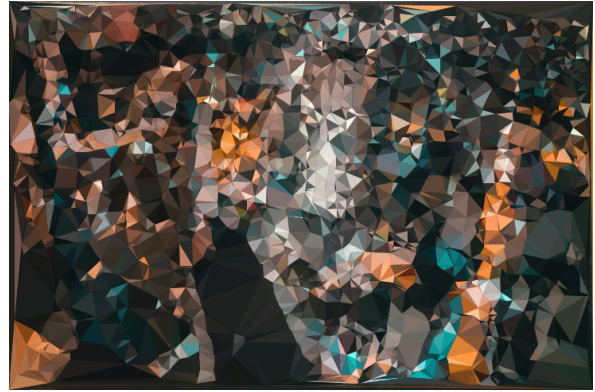


$|\mathcal{T}|=4966, R=19.4$

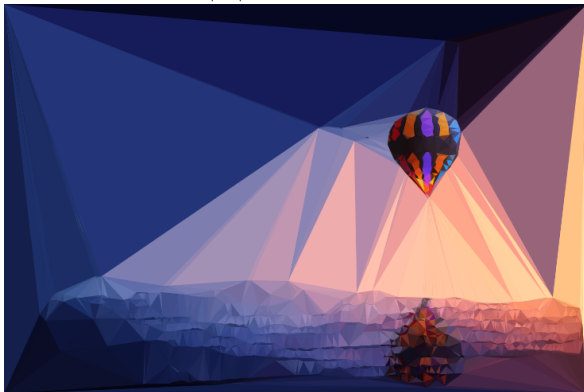
Figure 6: Larger version of the comparison from the main paper: Fischer



$|\mathcal{T}|=4436, R=19.3$



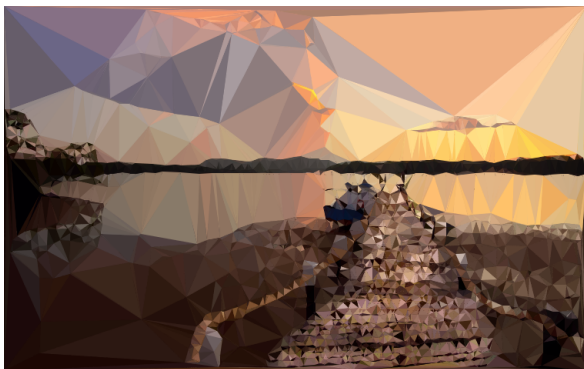
$|\mathcal{T}|=5631, R=36.6$



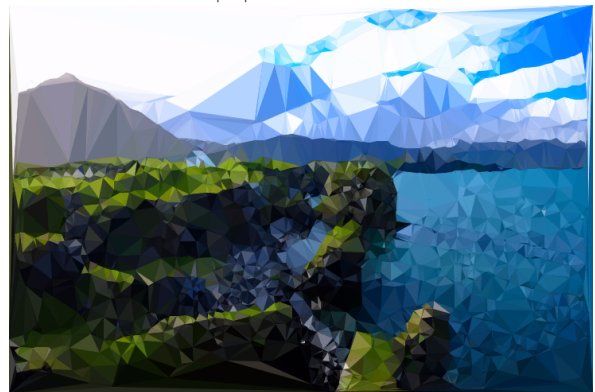
$|\mathcal{T}|=2511, R=32.2$



$|\mathcal{T}|=3954, R=17.5$



$|\mathcal{T}|=5018, R=25.5$



$|\mathcal{T}|=4927, R=22.4$

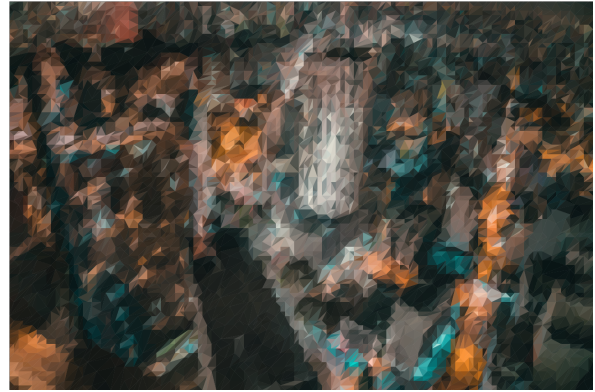


$|\mathcal{T}|=3970, R=15.9$

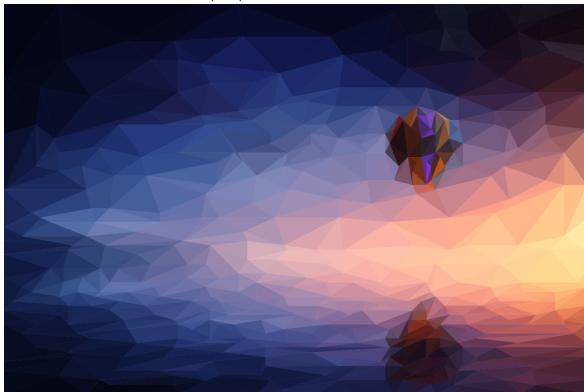
Figure 7: Larger version of the comparison from the main paper: Hamamuro



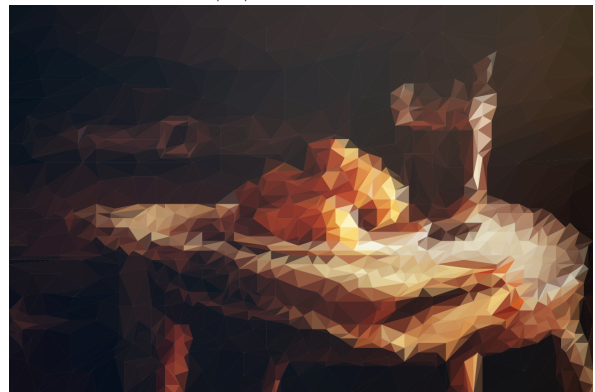
$|\mathcal{T}|=2019, R=18.4$



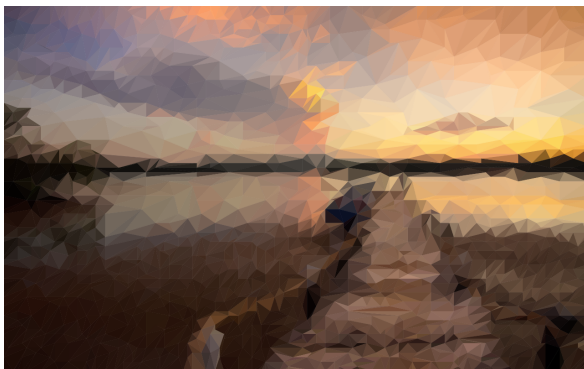
$|\mathcal{T}|=9698, R=27.8$



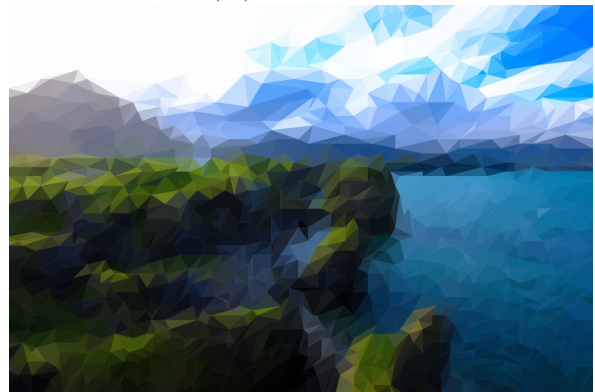
$|\mathcal{T}|=880, R=10.7$



$|\mathcal{T}|=1978, R=18.2$



$|\mathcal{T}|=2785, R=20.9$



$|\mathcal{T}|=2160, R=19.3$



$|\mathcal{T}|=1439, R=19.0$

Figure 8: Larger version of the comparison from the main paper: Garland and Heckbert



$|\mathcal{T}|=2010, R=11.6$



$|\mathcal{T}|=9698, R=18.9$



$|\mathcal{T}|=880, R=7.7$



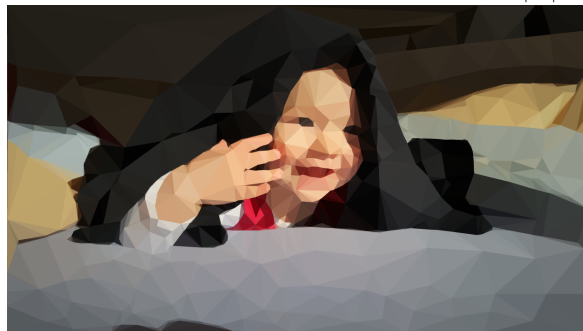
$|\mathcal{T}|=1978, R=9.2$



$|\mathcal{T}|=2785, R=15.3$



$|\mathcal{T}|=2160, R=13.9$



$|\mathcal{T}|=1439, R=8.9$

Figure 9: Larger version of the comparison from the main paper: Our method