



Fig. 4. These clouds are not a texture.



Fig. 5. The scene *Invisible Date* with smoke, lit through the door slit.



Fig. 6. The *Stiftsplatz* in a foggy atmosphere.

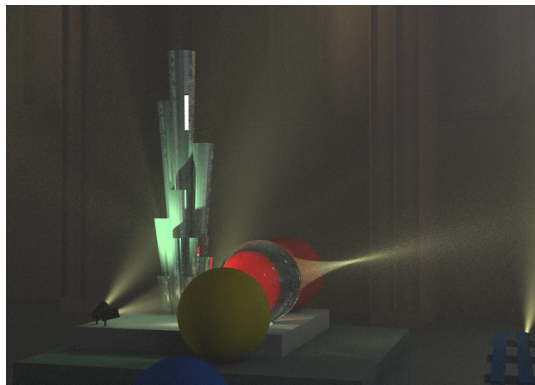


Fig. 7. A close-up of figure 6 featuring a volume caustic.

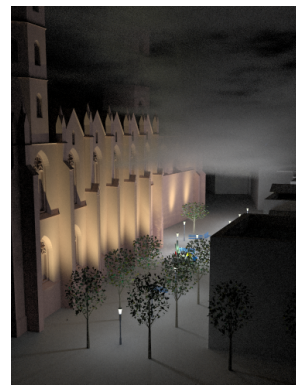


Fig. 8. The scene of figure 6 with an inhomogeneous medium.